



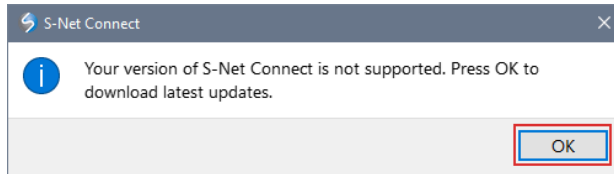
S-NET Connect 6.0

Upgrade Installation and Configuration Guide

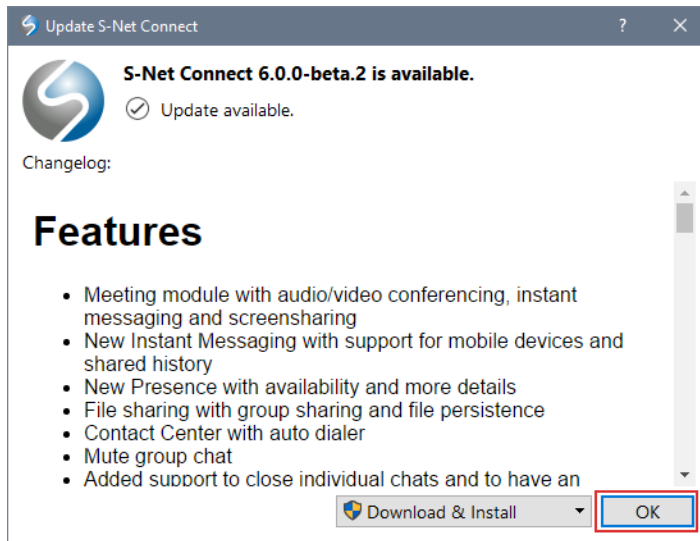
PC & MAC

Upgrade S-NET Connect

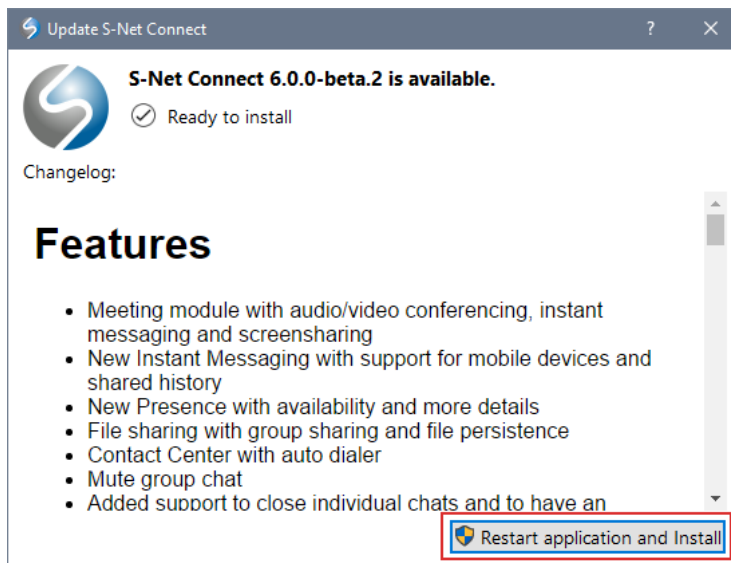
1. When your organization's cloud phone system software is upgraded to v 6.0, your existing edition of S-NET Connect will no longer be supported. To upgrade S-NET Connect, open the application and press **OK** when prompted.



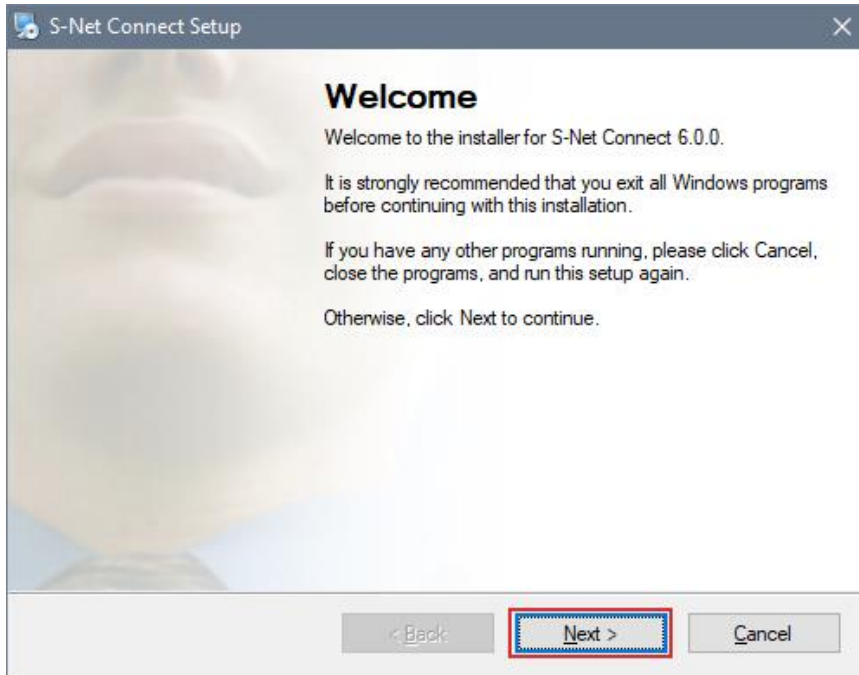
2. Select Download and install to upgrade to the latest version and press **OK**. Wait until the download is complete.



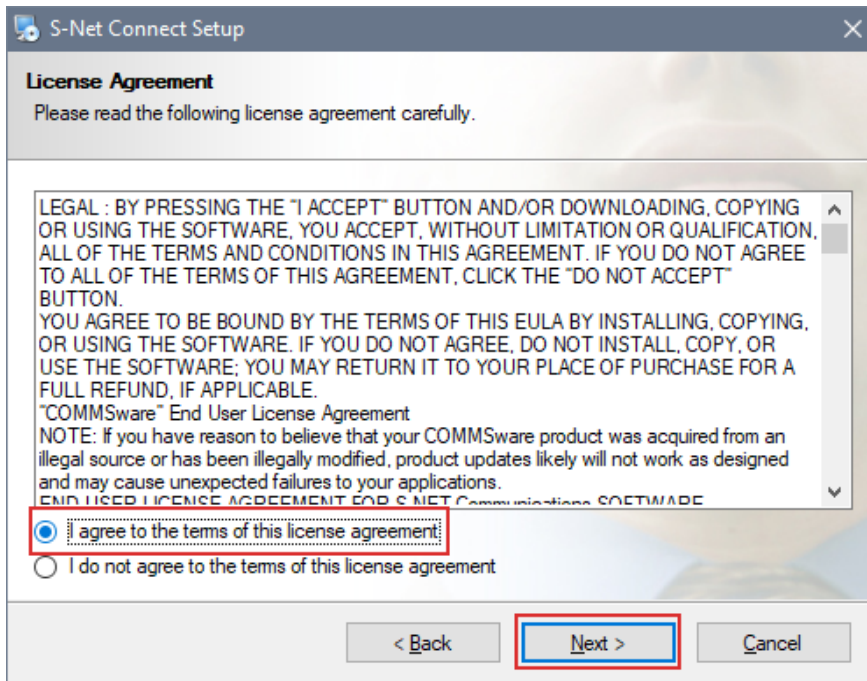
3. When the download is ready, click on the **Restart application and Install** button.



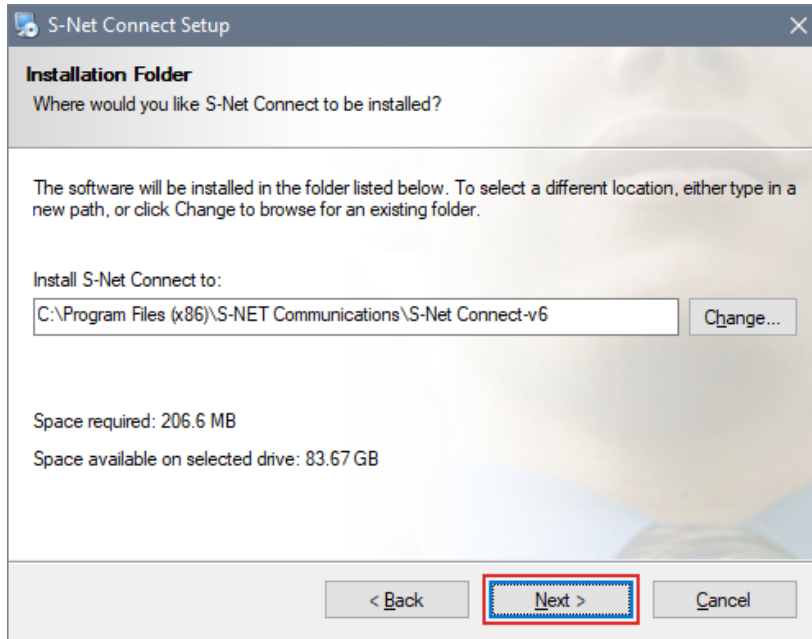
- Click **Next** to start the installation process.



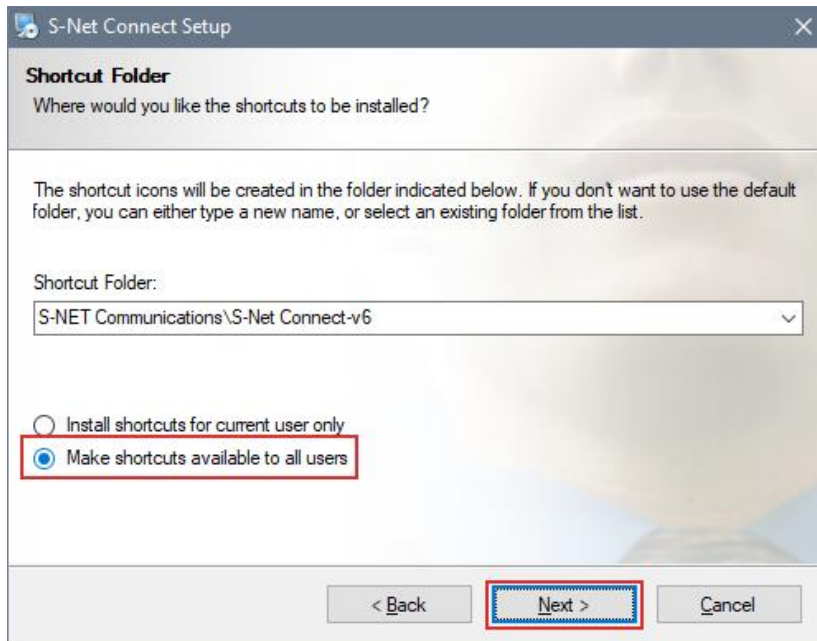
- Select **I agree to the End User License Agreement** and click **Next**.



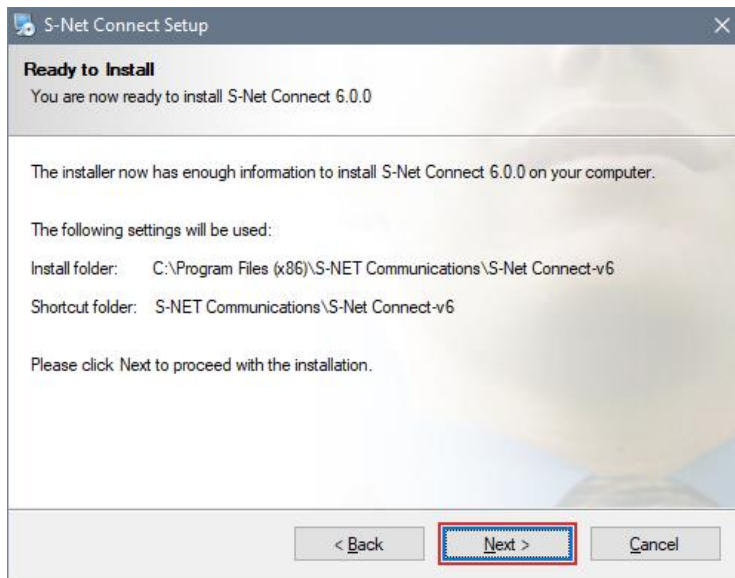
6. Select a folder where you would like to install the application and click [Next](#).



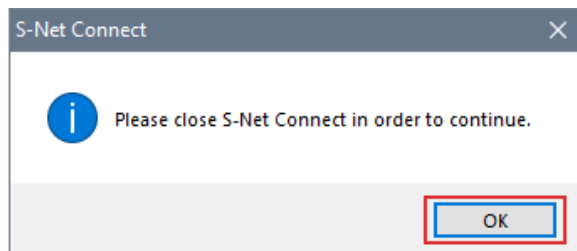
7. Determine whether your shortcut would be available to one or multiple users and click [Next](#).



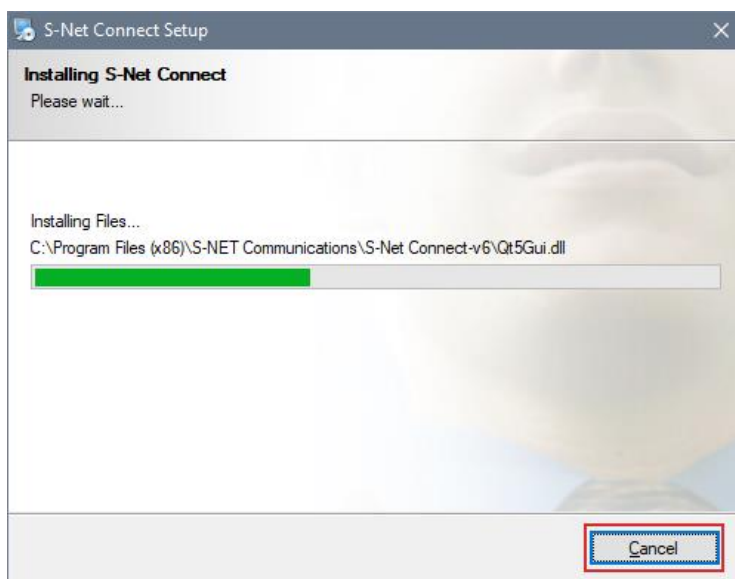
8. Double-check your settings and Click **Next**.



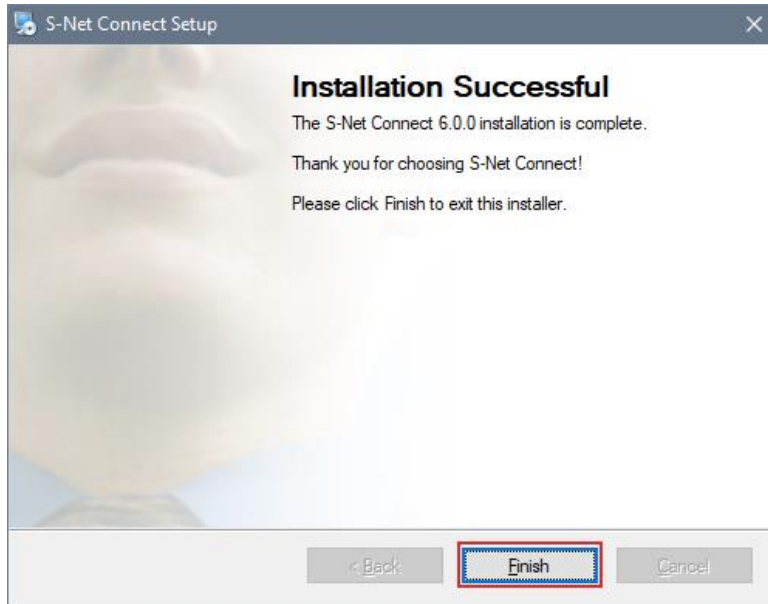
9. Click **OK** to close S-NET Connect.



10. Click on **Next** to install the application.



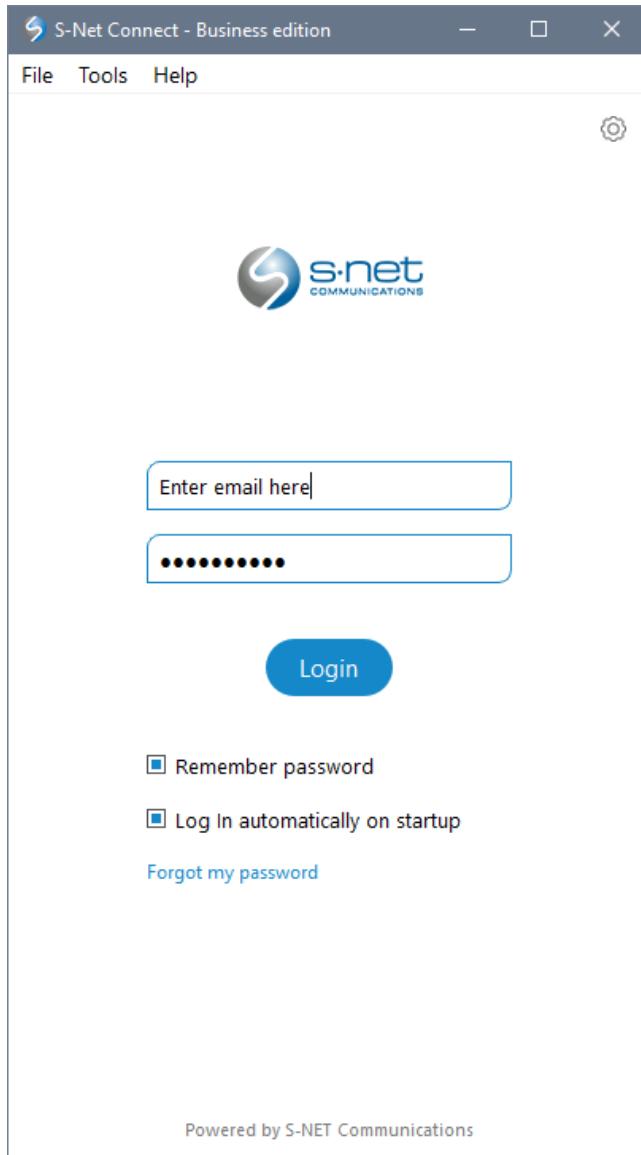
11. When the installation is complete, click **Finish** to exit.



12. Once the installation is completed, you should see a new S-NET Connect v6 icon on your desktop. Double click the icon to open the application.



13. Use your email and existing password to log in. Enter your email, password and click [Login](#) to



S-Net Connect - Business edition

File Tools Help

s.net
COMMUNICATIONS

Enter email here

••••••••

Login

Remember password

Log In automatically on startup

[Forgot my password](#)

Powered by S-NET Communications